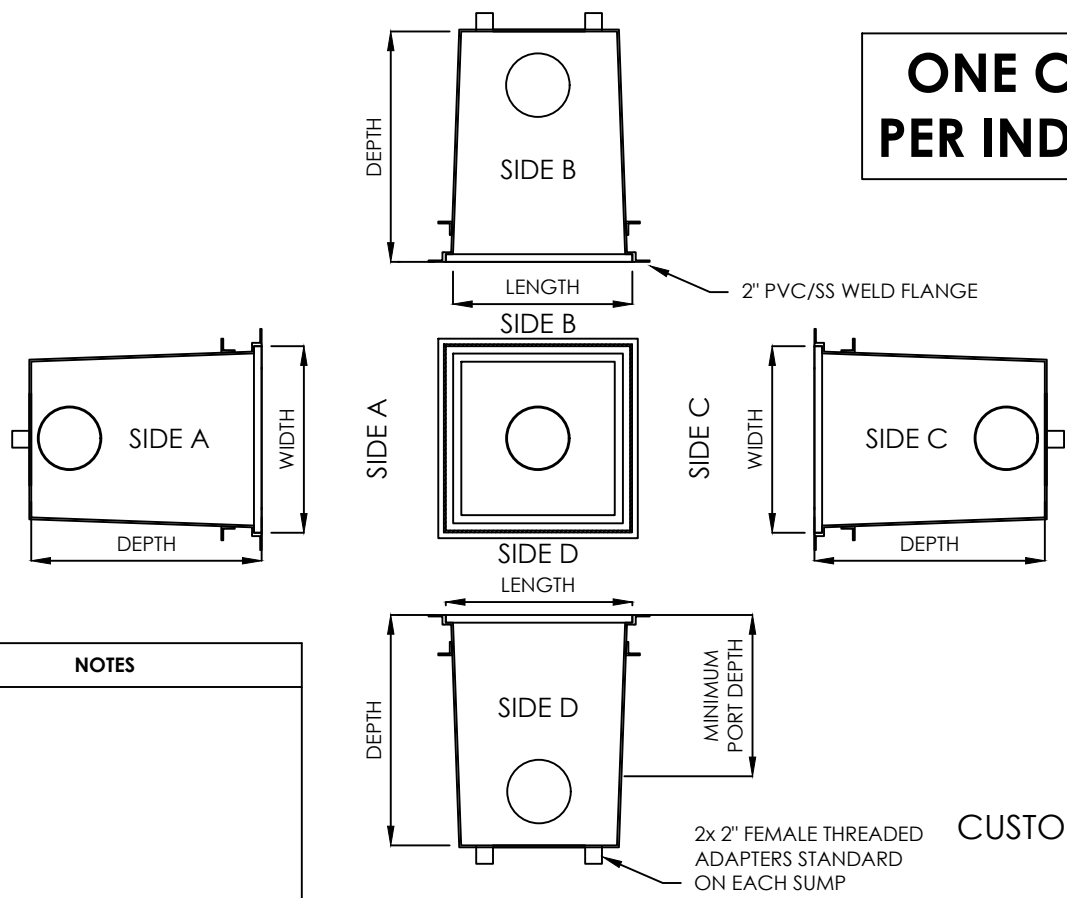


ONE COMPLETED, SIGNED FORM PER INDIVIDUAL SUMP IS REQUIRED



PRODUCT INFORMATION	
WIDTH	24"
LENGTH	24"
DEPTH - APSP-16 2017 SUMP	30"
MAX. SIDE PORT SIZE	12"
MIN. PORT OPENING DEPTH	16.5"

1. SOFA UNIT (SUMP, GRATE, FASTENERS, DOCUMENTATION) IS VGB 2017 COMPLIANT; TESTED, CERTIFIED, AND LISTED BY IAPMO AS COMPLIANT TO APSP/ANSI/ICC-16 2017, NSF/ANSI/CAN 50-2020, AND USPC.
2. PORTS CANNOT EXCEED THE MAXIMUM SIZE PER TABLE
3. PORT SIZES > 12" ARE PERMITTED WHEN LOCATED ON THE BOTTOM OF THE SOFA.

NOTES

CUSTOMER SIGNATURE: _____
 DATE: _____

TABLE OF SUMP ORDER FORM DETAIL - ONE FORM PER SUMP

PORT LOCATION	SIDE A	SIDE B	SIDE C	SIDE D	BOTTOM
SELECT LOCATION					
PORT SIZE - INCHES					

TYPE OF PORT	SELECT PORT TYPE	SLIP COUPLING	THREADED ADAPTER	OTHER
PIPE SCHEDULE	SELECT PORT SCHEDULE	SCH-40	SCH-80	

All drawing are saved in a *.dwg format and are provided as a service to our customers; dimensions supplied by Daldorado are for reference only. Daldorado or any authorized distributor of our products will not be held responsible from files which have been converted and does not warranty the documents against deficiencies or typographical errors of any kind. All measurements of the actual product must be verified before any custom fabrication in the field occurs. COPYRIGHT: This document is the property of Daldorado, LLC and is provided on an in-confidence basis, it may not be copied or reproduced without the permission of Daldorado or its authorized agent.

4327 Arnold Avenue, Naples, FL 34104 Phone: (888) 509-8128 www.daldorado.com

Product: 24x24x30 Sump & Grate Order Form	
Product #: DalMAX-MBD-242430	
Material: FG/PVC	Rev Date: 07/20/2022
Color: WHITE	Rev By: Daldorado

